

TimeControl[®] and ERP Systems



Integrating Enterprise Resource Planning with Project Time Tracking

Collecting labor hours and activity progress from individual project members can be a challenging. All too often, timesheet systems designed for payroll purposes do not provide the structure for project-oriented businesses to track effort per task. It's enough to send a chill down the back of even the most experienced project managers.

To solve this problem, HMS Software created TimeControl[®], a client/server timesheet system specifically designed to collect labor actuals and project progress for project-oriented businesses.

TimeControl provides an easy-to-use Web-based interface for company-wide use. Users select tasks from a simple drop-down list that includes only the project and non-project charge codes appropriate to them. Users can also enter activity progress directly in the timesheet view. Once entered, automated validation rules immediately tell the users if their timesheets comply with the various business rules that apply to them. Timesheets can then be passed through as few or as many levels of approval as required, either directly into the client/server database or via Internet e-mail.

HMS Software has created a bi-directional interface between TimeControl and virtually any financial application including most popular ERP systems such as SAP, Oracle Financials, PeopleSoft and Baan, that enables project progress data to be seamlessly transferred between the two systems. TimeControl also links the timesheet data directly to most popular project scheduling packages such as Microsoft Project, Primavera's P3, P3e and TeamPlay and Welcom's Open Plan and Cobra. Now, for the first time, labor actuals used by Finance and Project Management can come from an identical source.

TimeControl provides extensive flexibility behind the scenes; Administrators can manipulate unlimited rates, codes, WBS elements and user-defined fields. TimeControl allows security on menus, reports and even field-by-field. TimeControl data can be stored directly into Oracle, Sybase, SQL Server, Informix or InterBase databases.

Integration between TimeControl and ERP Systems

Benefits of using

TimeControl with ERP:

- ensure consistency of time data between payroll and project management systems
- collect labor hours from each member of the project team
- collect overhead costs from non-project employees
- a timesheet solution for everyone in the company, not just project team members
- provide an audit trail of actual labor costs
- easily link to corporate financial and payroll systems
- very scalable solution from 20 to 100,000 users
- n-tier architecture that is easy to deploy: zero client configuration
- web-based interface requires no end-user training
- automated validation rules simplify the timesheet authorization process
- unique Matrix Approval Process for Labor Actuals™ is ideal for both project management and financial department use

TimeControl Features

- both a Web and Windows Interface
- timesheet interface in Java for multi-platform support
- multilingual interface includes many languages and the ability for to add more
- supports major client/server databases including Oracle, SQL Server, Sybase, Informix and InterBase

For more information, contact:

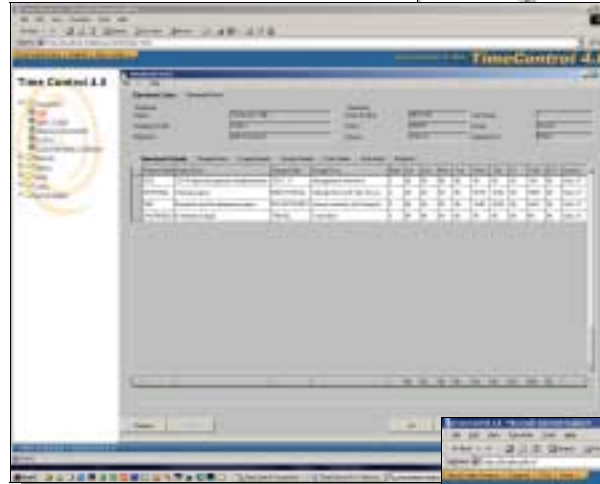
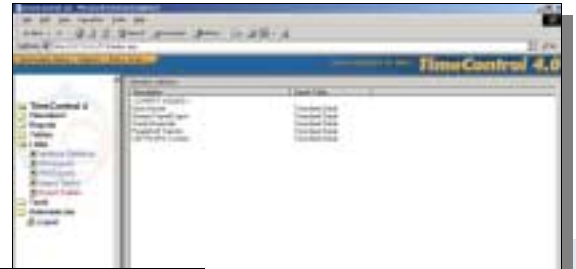
HMS Software

1000 St. Jean, suite 711
Pointe Claire, Quebec H9R 5P1
Tel: 514-695-8122

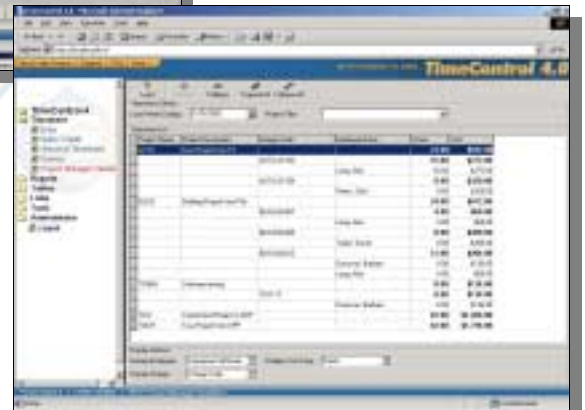
Email: info@hmssoftware.ca

Web: www.hmssoftware.ca

TimeControl links directly to virtually any finance system as well as popular ERP systems such as SAP, PeopleSoft, Oracle Financials and Baan.



TimeControl's easy-to-use interface makes it easy to distribute to all staff.



The Project Manager Validation function lets project managers see and approve changes by project and activity.

TimeControl links directly with virtually any financial application including popular ERP systems such as SAP R/3, PeopleSoft, Oracle Financials and Baan.

Problem: Your company needs a timesheet system that can be used by everyone, even project related employees, and can easily link with your financial and payroll systems.

Solution: TimeControl is a dedicated timesheet system designed to serve the needs of both Finance and Project Management with support for MS Project, Primavera and Open Plan.

Problem: You must begin to track actual hours by task in order to properly capitalize labor costs or for R&D tax credit purposes

Solution: TimeControl is a project-oriented system that tracks labor costs to the task level and whose data is fully auditable.

Problem: You must comply with SOP-98, DCAA, FMLA or EEC work rules.

Solution: Deploy TimeControl across the enterprise and track time for both activity-based requirements like SOP-98 or DCAA and for HR-based requirements like FMLA or EEC work rules from the same system.