

TimeControl[®] 6

and

Primavera

TimeControl - Timesheet List - Internet Explorer provided by Dell

http://192.168.0.80/Application/Timesheet/TimesheetList.aspx

TimeControl Administrator Dashboard My Account Logout Help

Home Timesheet Reports Tables Links Tools Administrator

Navigation

- Debit/Credit Entry
- Timesheet Posting
- Project Manager Validation
- Batch release
- Drill Down Analyzer

Screen Actions

- Add
- Delete
- Release
- Reject
- Print
- Options
- Filter

TimeControl - Timesheet List

<input type="checkbox"/>	Employee Full Name	Period Start Date	Week Ending Date	Total Hours	Timesheet Status	Owner	
<input type="checkbox"/>	Vandersluis, Chris	7/3/2010	7/9/2010	37h30m	DRAFT	Chris Vandersluis	View
<input type="checkbox"/>	Vandersluis, Chris	7/10/2010	7/16/2010	0h	DRAFT	Chris Vandersluis	View

Done Internet | Protected Mode: Off 100%

TimeControl and Primavera...

Collecting labor hours is challenging enough but when you need to collect timesheet information for both Finance and project management, that challenge can become daunting. Now HMS Software and Oracle-Primavera have teamed up to help make timesheet collection as easy as possible.

HMS Software's TimeControl is a timesheet system specifically designed to collect labor actuals and project progress for project-oriented businesses. Now, for the first time, both project and non-project personnel can use just one timesheet for both purposes.

TimeControl provides an easy-to-use web timesheet interface. Users enter their hours and progress on both project and non-project tasks directly in the web-based timesheet screen. Once entered, automated validation immediately let the users know if their timesheets comply with any business or payroll rules that apply to them. Timesheets can then be passed through as few or as many levels of approval as required and then sent to HR, Payroll or other internal systems.

When integrated with Primavera, TimeControl enables project progress data to be seamlessly transferred between the two systems. TimeControl timesheets can be pre-loaded with Primavera activities the employee was scheduled on and once all timesheets are collected, TimeControl sends the hours, costs and activity progress data back to Primavera. The transfer also supports updating Primavera Steps and Financial periods.

TimeControl provides extensive flexibility behind the scenes and stores it's data in Oracle, SQL Server, Sybase or MySQL.

The screenshot displays the Primavera software interface. The main window is titled 'Primavera : Auto (Automated System)'. It features a menu bar (File, Edit, View, Project, Enterprise, Tools, Admin, Help) and a toolbar with navigation buttons (Back, Forward, Home, Dir., Help). The central area is divided into two panes. The left pane, titled 'Activities', shows a table of project activities. The right pane is a Gantt chart showing the schedule for these activities from July to October.

Activity ID	Activity Name	Original Duration	Actual Labor Units	Remaining Duration	Schedule % Complete
AS219	Install System & Misc. Co	19	0	19	0%
AS108	Install System Controller	13	28	13	0%
AS250	Install Bar Rails	4	0	4	0%
Software		32	0	32	0%
AS113	Install Processor/Softwar...	3	0	3	0%
AS150	Production Start	0	0	0	0%
AS-S	Software Summary	33	0	33	0%
AS115	Load System Software	1	0	1	0%
AS600	Manual Operation Ready	1	0	1	0%
AS116	Program	14	0	14	0%
AS280	Test Software	4	0	4	0%
AS285	Debug Software	6	0	6	0%
AS500	Automatic Operation Ready	1	0	1	0%
AS117	Startup Procedure Develop...	2	0	2	0%
Training		7	0	7	0%
Manuals		7	0	7	0%
AS118	Training Manuals/System ...	7	0	7	0%

The Gantt chart on the right shows the schedule for these activities. The x-axis represents time from July to October. The y-axis lists activities: Install System & Misc. Components, Install System Controller, Install Bar Rails, Install Processor/Software/Data Tapes, Production Start, Software Summary, Load System Software, Manual Operation Ready, Program, Test Software, Debug Software, Automatic Operation Ready, and Startup Procedure Development. The chart uses colored bars to represent the duration of each activity.

At the bottom of the interface, there is a detailed view for the selected activity 'AS108 Install System Controller'. It includes tabs for General, Status, Resources, Relationships, Codes, Notebook, Steps, Feedback, WPs & Docs, Expenses, and Summary. The 'Resources' tab is active, showing a table of resources assigned to the activity.

Resource ID Name	Curve	Cost Account	Remaining Units / Time	Price / Unit	Budgeted Units	Actual This Period Units	Actual Units	Completion Units
GailR.Gail Robinson				\$24	100	28	28	100

...make a powerful combination

Basic task tracking

Link TimeControl to Primavera's P6 and the hours, costs and estimate to complete information can be collected from each resource. TimeControl can even pre-load the user's assignments into their timesheet for the week.

Cost tracking

TimeControl supports an unlimited number of rates per resource which allows rates to differ per project and even per task. The rates can change over time and TimeControl will keep an auditable record of what was charged at any time. TimeControl can track both internal and external costs and transfer back totals per task or detailed Financial Period information.

HR Tracking of vacation, sick leave, personal time

TimeControl maintains records of not just project time but also non-project time such as vacations, sick leave and personal time off. TimeControl can manage business rules such as ensuring that people don't take vacation their not entitled to. The resulting information can be transferred directly back to virtually any HR system. TimeControl's TimeRequest™ system allows you to implement approvals for vacation, personal time or other future time entries.

Use TimeControl Industrial for crew timesheets and material/equipment usage

TimeControl's Industrial version allows you to track timesheets from crews who are in the field. A crew-entry system and material/equipment usage module allows project clerks to enter a high volume of data very easily on a weekly, daily or even shift basis. This data is then available to Primavera as well as Payroll, HR, Job Costing or other systems.

TimeControl® Gail Robinson Dashboard My Account Logout Help

Home Timesheet Reports Tools Documentation

Navigation: List, Entry, Time Requests

Screen Actions: Previous, Next, Timesheet, Debit/Credit, Delete, Release, Reject, Print

Entry

Employee Information
Employee: Robinson, Gail
Resource: Gail Robinson

Timesheet Information
Period: 7/9/2011 - 7/15/2011
Timesheet Status: DRAFT
Timesheet Header Owner: Gail Robinson
Timesheet Header Source: Gail Robinson
Last Owner: --
releasing to: Tom Logan

+/-		Project Name	Charge Code	Charge Description	Rate Code	Mon.	Tue.	Wed.	Thu.	Fri.	Sat.	Sun.	Total	ETC	
⊕	<input type="checkbox"/>	AUTO	AUTO.AS115	Load System Software	STANDARD	0h	0h	0h	1h30m	4h	0h	0h	5h30m		
⊖	<input checked="" type="checkbox"/>	AUTO	AUTO.AS108	Install System Controller	STANDARD		8h	6h	8h	3h30m	0h	0h	0h	25h30m	100
⊕	<input type="checkbox"/>	INTERNAL	INTERNAL.MEETINGS	General Meetings	STANDARD	0h	2h	0h	3h	4h	0h	0h	9h		

8h 8h 8h 8h 0h 0h 40h

TimeControl is a powerful, flexible, timesheet system designed to integrate with both Project Management and Finance systems



TimeControl functionality

Validation Rules

TimeControl includes an entire Business Rule system. Administrators can configure rules as warnings or errors.

Manage Vacation, Sick Leave, Personal time

TimeControl allows time to be managed banks of Vacation, Sick Leave, Personal time and any other definition of non-project time. You can even use TimeControl's TimeRequest™ module to request vacation or time-off approval.

Managed banked overtime

TimeControl supports managing banked overtime with our Validation Rules.

Integration with external systems

TimeControl links to virtually any HR, Payroll, Finance and ERP system

The Matrix Approval Process for Labor Actuals™

HMS Software's unique Matrix Approval Process for Labor Actuals™ allows both the organizational and project aspects of the organization to approve timesheet data.

Reporting and Drill-down access

TimeControl includes an extensive reporting system and a Drill Down Analyzer for instant analysis.

Email notification

TimeControl includes an ability to automatically schedule email notifications for missing timesheets.

Manage Start/Stop per day or per item

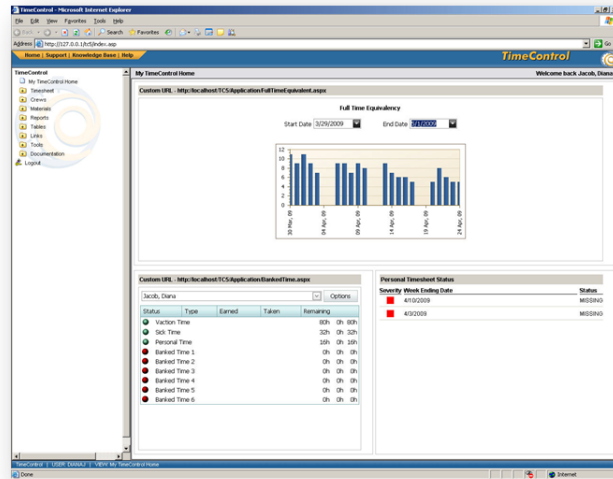
TimeControl supports tracking of multiple Start/Stop times per day.

Multiple Currency

You can identify certain rates as being associated with a specific currency.

Government Compliance

TimeControl is designed to conform with numerous government directives such as the DCAA, ARRA Reporting, Sarbanes-Oxley, R&D Tax credits, the European Time Directives, FMLA and the California Wage Laws.



The screenshot shows the 'Drill Down Analyzer' table in the TimeControl web interface. The table has columns for 'Change Code', 'Project Name', 'Employee Full Name', 'Project Date', 'Project Rate Code', 'Project Hours', 'Project Rate 1', 'Project Rate 2', 'Project Cost 1', 'Project Cost 2', and 'Capitalize'. The table contains multiple rows of data for various projects and employees, including names like 'Donovan, Barbara', 'Lopez, Tom', and 'Robinson, Gail'.

HMS Software

189 Hymus, Suite 402
Pointe Claire, QC H9R 1E9
Tel: 514-695-8122
Fax: 514-695-8121
Email: info@hmssoftware.ca
Web: www.hmssoftware.ca

LOGICIEL **ORACLE** PARTNER

HMS SOFTWARE

www.timecontrol.com