

# TimeControl<sup>®</sup> Industrial

## TimeControl Industrial

Works in industrial and heavy construction industries as well as in the back office

The screenshot displays the TimeControl Professional 4.4 software interface. The top window is a Microsoft Internet Explorer browser showing the application's home page. The page includes a navigation menu (Home, Support, Knowledge Base, Help) and a sidebar with options like Timesheet, Reports, Tables, Links, Tools, Administrator, and Logout. The main content area, titled "My TimeControl Home Page", features a "Vacation/Sick/Personal time remaining" table and a "Timesheets Awaiting Approval" section.

Severity	Description	Alloted	Taken	Remaining
■	Remaining Vacation Time	15.0d	0.0d	15.0d
■	Remaining Illness Time	5.0d	0.0d	5.0d
■	Remaining Personal Time	3.0d	0.0d	3.0d

The bottom window is the "Material Timesheet Entry" form. It shows a timesheet entry for "W/kip of pipe" dated 11/12/2006, owned by ADMIN, with a status of DRAFT. Below the form is a table of resource entries:

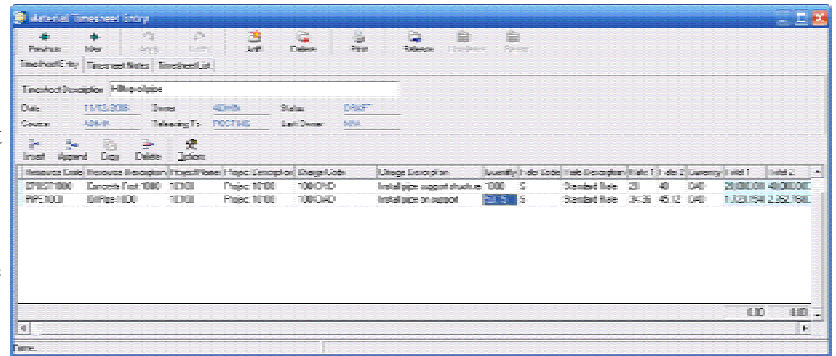
Resource Code	Resource Description	Project Name	Project Description	Charge Code	Charge Description	Quantity	Rate Code	Rate Description	Rate 1	Rate 2	Currency	Total 1	Total 2
CPST1000	Concrete Post 000	10130	Project 101CD	100-DVD	Install pipe support structure	1000	\$	Standard Rate	20	40	CAD	20,000.00	40,000.00C
PIPE1003	Oil Pipe 1000	10130	Project 101CD	100-DAD	Install pipe on support	EC.15	\$	Standard Rate	34.36	45.12	CAD	1,723,154	2,262,768C

# Timesheet for Industrial use

In today's challenging economy, organizations need to be as effective as possible. HMS Software, the makers of the popular TimeControl timesheet system have created software specifically for industrial use. *TimeControlIndustrial* has been designed for industrial situations to track the time used of personnel in the field whether that be outdoors in a construction environment or in the plant during maintenance and turnaround projects. As with all of TimeControl's editions, this version links with both Project Management systems like Primavera and Microsoft Project as well as with Finance systems to provide a single source of time entry for billing, auditing, project tracking and payroll!

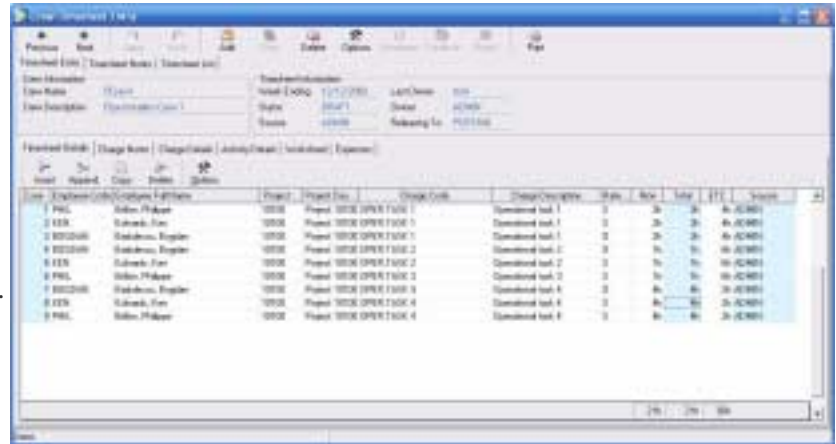
## Crew Entry

Aside from the weekly timesheet that is designed for backoffice workers, *TimeControlIndustrial's* Crew Entry interface allows crews to be assembled and then their time entered for the entire crew at once. Blank timesheets can be carried by the foreman or supervisor and then the timesheet for the entire crew is entered at one time. The Crew Entry timesheet can be done each day, each shift or for an entire week at a time.



## Material Management

*TimeControlIndustrial* supports Material usage entry. Aside from labor entries which list the hours and costs associated to personnel working on a project, there are often non-labor resources that are used. The Material Management system in *TimeControlIndustrial* allows entries of other resources such as materials, equipment, rentals, even costs to be tracked. The TimeControl rates system has been extended from the in *TimeControlIndustrial* to allow rates to be defined for any type of resource, not just hours.



## Complex Rates

*TimeControlIndustrial* includes a completely new approach to rate management. Aside from the existing Rate system which was already revolutionary in the classic versions of TimeControl, this new system allows for the complex rates that are often found in industrial situations. This includes escalated rates, rates which must support premiums for certain kinds of work and more. Literally millions of possible rate combinations can be supported.

## Solutions for owners and contractors

*TimeControlIndustrial* is ideal for both owners who wish to control work and ensure that hours are appropriately spent and contractors who wish to reduce billing conflicts and ensure that they are paid promptly.

# for Projects and Finance

## TimeControl Classic features

*TimeControl* Industrial includes all the features you've come to know from the classic editions of *TimeControl* including the weekly timesheet for back-office users, unlimited rates per employee, customizable reporting, automated business rules during approvals and tremendous flexibility.

## Timesheet Matrix Approvals

*TimeControl* supports HMS Software's unique Matrix Approval Process for Labor Actuals™ which allows for quick authorization of project data. This process resolves the inherent conflict that is found when both the finance and project management hierarchies must approve timesheet data simultaneously. Automated validation of timesheet data is handled by *TimeControl*'s remarkable Validation Rules. Additional approvals can be done manually with a simple Approve/Reject or Approve/Update process. The Project Manager Validation screen displays an easy-to-view hierarchical interface for managing project approvals.

## Links to Project Management Systems

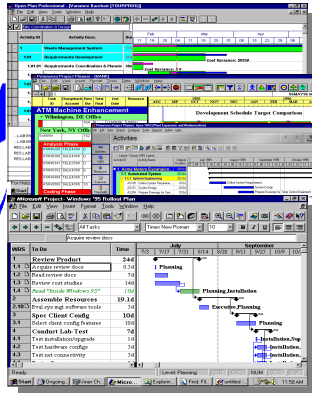
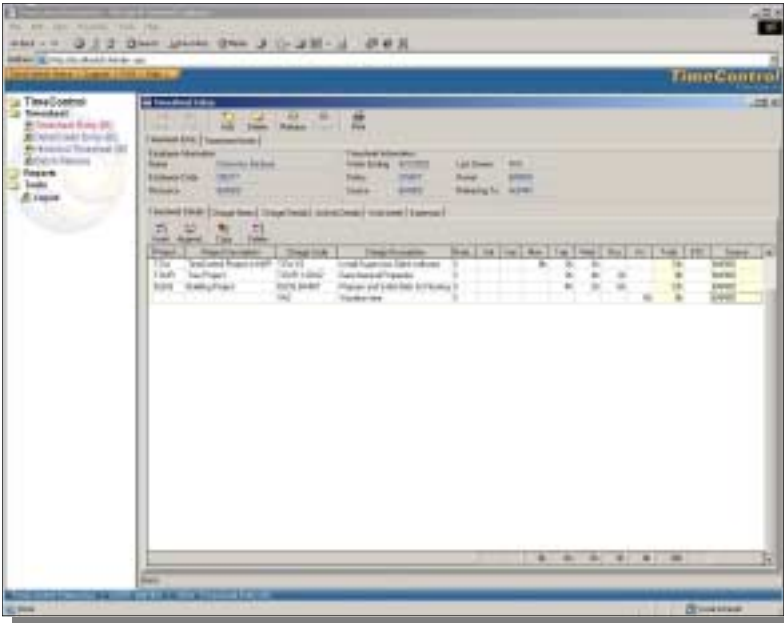
*TimeControl* includes direct links to project management systems such as Microsoft Project, Project Server, Primavera, Deltek's Open Plan, and Cobra. As well, *TimeControl* integrates into the Project Server Web Access interface.

Integrating with a project management system drastically reduces timesheet errors as time can only be charged against valid tasks. Hours entered in *TimeControl* are returned directly to the project management system as activity and resource progress.

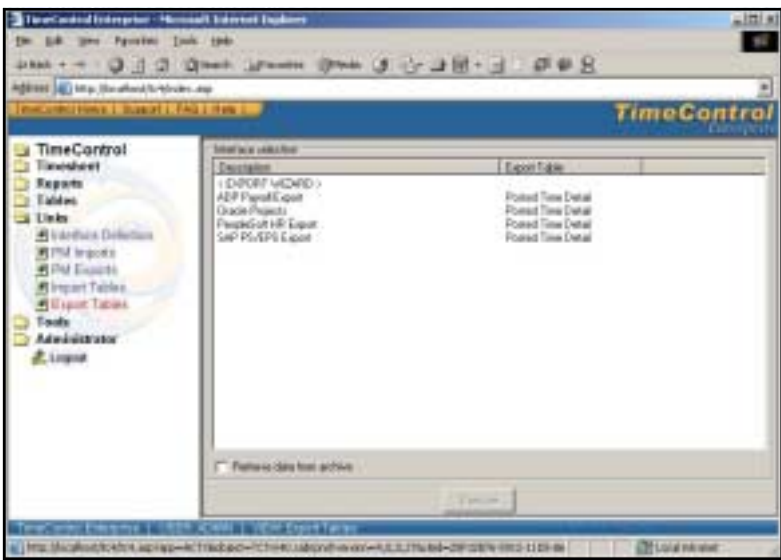
## Links to Finance Systems

- Along with its ability to link directly to the most popular project management applications, *TimeControl* also links to virtually any ERP or Finance system including SAP, Oracle Financials, PeopleSoft, Baan and Microsoft Dynamics.

The auditable nature of *TimeControl* data makes it an ideal complement to your Finance System. No longer must you worry about reconciling the data from multiple timesheet systems or multiple sources. Both Finance and Project Management are able to work directly from the same data across the enterprise.



**TimeControl already integrates with Microsoft Project, Project Server, Primavera's P3, P3e and TeamPlay and Deltek's Open Plan and Cobra.**



# TimeControl delivers a powerful, flexible, timekeeping system specifically designed for project environments



## Features

### Industrial features

- Crew timesheet entry
- Materials usage entry
- Complex Rate structure

### Easy to use Interface

- Full browser-based interface and;
- Both a Windows and Web interface
- Scaleable, multi-level interface facilitates use for data entry users yet provides full functionality for administrators
- Multilingual interface
- Unlimited charge codes displayed in simple, hierarchical drop-down lists
- Project management system activity information viewable directly in TimeControl
- Unlimited free-form notes for each line item and each timesheet
- E-mail-enabled. E-mail messages sent for system notices such as rejected timesheets or missing timesheets
- Scheduleable E-mail notification for missing or unapproved timesheets.
- Predefined timesheets based on resource assignments from the project management system
- Customizable menus

### Robust Architecture

- Open database architecture; support for Oracle, Microsoft SQL Server, and InterBase databases
- N-tier architecture makes system scaleable for 10 to 100,000 employees
- Unlimited rate codes per employee
- Field-level security. Make any field visible, value read-only, or invisible
- Complete redefinition of every field label in the system through a simple language editor
- Complete auditability of timesheet data

- User-defined fields on every table
- Add pop-up data validation for each user-defined field
- Data Dictionary facilitates integration with any external system
- Allows charges to be linked to a specific project
- Allows charges which are project-independent
- Multiple overhead charge types
- Extensive activity data stored for each charge code
- Filter charge codes, projects and rates visible to any employee
- Asynchronous updates for remote satellite operations using the TimeControl Consolidator

### Web Interface

- MyTimeControl™ home page dashboard gives extensive and customizable information to employees
- Smart Client architecture delivers rich functionality in a browser interface for all versions
- A multi-platform timesheet is included with TCE which supports Windows, Sun, Linux and other platforms
- Timesheet supports proxy server security

### Approval Process

- HMS's unique *Matrix Approval Process for Labor Actuals™*
- Unlimited automatic Validation Rules are user defineable, flexible and can be applied globally or to any group or even an individual
- Unlimited manual validation levels in which each employee can have a unique approval routing

### Links to Project Management

- Direct integration with popular project

management systems such as Microsoft Project and Project Server, Primavera and Deltek's Open Plan and Cobra

- Supports multiple project management systems
- Customizable import/export function to interface with virtually any finance or ERP system including SAP, Oracle, PeopleSoft and Microsoft Dynamics

### Flexible Reporting

- Excel-like reporting format allows output to any Windows-compliant printer or reports can be saved as Excel, XML or HTML files
- Reporting Wizards allow an unlimited number of reports to be created and saved for later use
- Unlimited levels of data selection, filtering and sorting

### Expense Reports

- Users can enter non-labor costs on their timesheet
- Unlimited number of expense items per timesheet line item
- Expenses can be tracked back to a project management and/or finance system

### Government Compliance

- Complies with requirements for DCAA, European Time Directives, FMLA, the California Wage Laws and Sarbanes-Oxley

### HMS Software

1000 St-Jean, Suite 200  
Pointe Claire, QC H9R 5P1  
Tel: 514-695-8122  
Fax: 514-695-8121  
Email: info@hmssoftware.ca  
Web: www.hmssoftware.ca

LOGICIEL  
**HMS**  
SOFTWARE

TimeControl  
Enterprise timesheets  
for project environments